

Great Yarmouth Third River Crossing

Application for Development Consent Order

Document 6.3: Environmental Statement

Volume III: ES Figures –

Chapter 14

Planning Act 2008

The Infrastructure Planning (Applications: Prescribed Forms and Procedure) Regulations 2009 (as amended) (“APFP”)

APFP regulation Number: 5(2)(a)

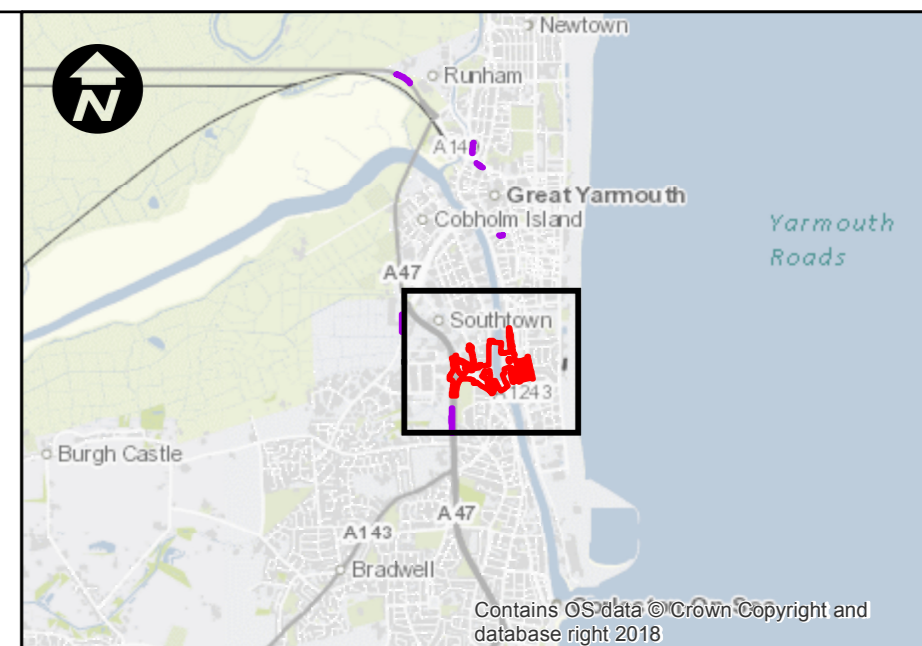
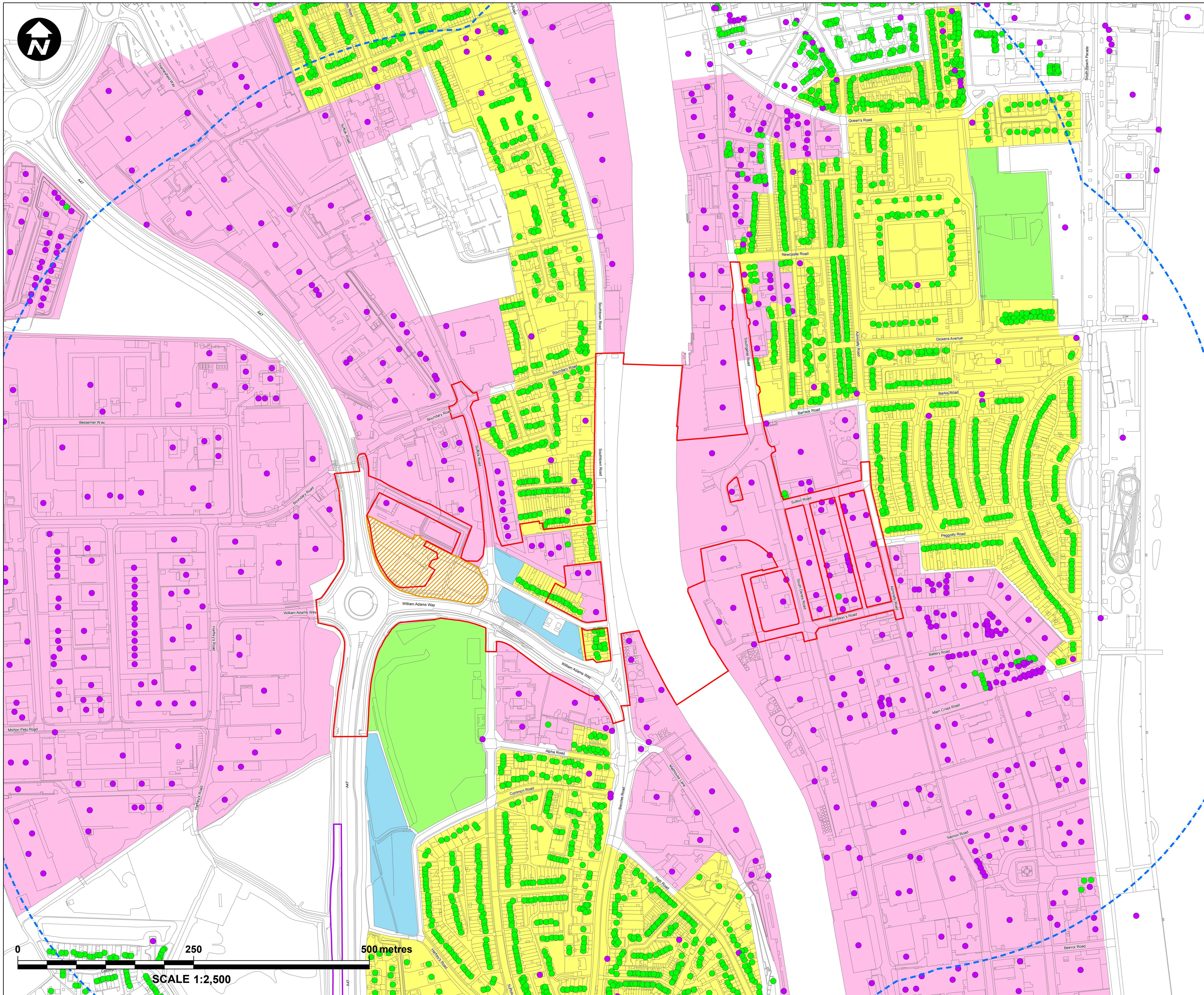
Planning Inspectorate Reference Number: TR010043

Author: Norfolk County Council

Document Reference: 6.3 – ES Figures: Chapter 14

Version Number: 0 – Revision for Submission

Date: 30 April 2019



Key:

- Principal Application Site
- Satellite Application Sites
- 500m Study Area
- Residential
- Commercial

Land Use

- Allotment Gardens
- Commercial
- Open Space
- Residential
- Open Amenity Space (encompassing Kingsgate Community Church)

Mapping reproduced by permission of Ordnance Survey on behalf of HMSO.
 © Crown copyright and database rights 2018 Ordnance Survey 100019340.

REVISION	DRAWN	CHECKED	APPROVED	DATE

Norfolk County Council
 Tom McCabe
 Executive Director of
 Community and Environmental Services
 Norfolk County Council
 County Hall, Martineau Lane
 Norwich NR1 2SG

PROJECT TITLE
**GREAT YARMOUTH
 THIRD RIVER CROSSING**

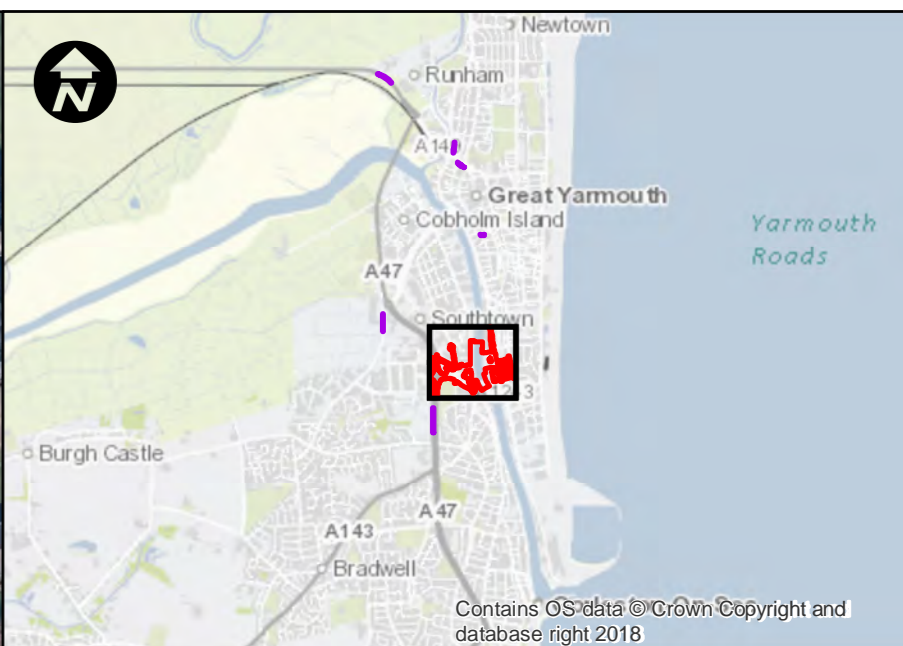
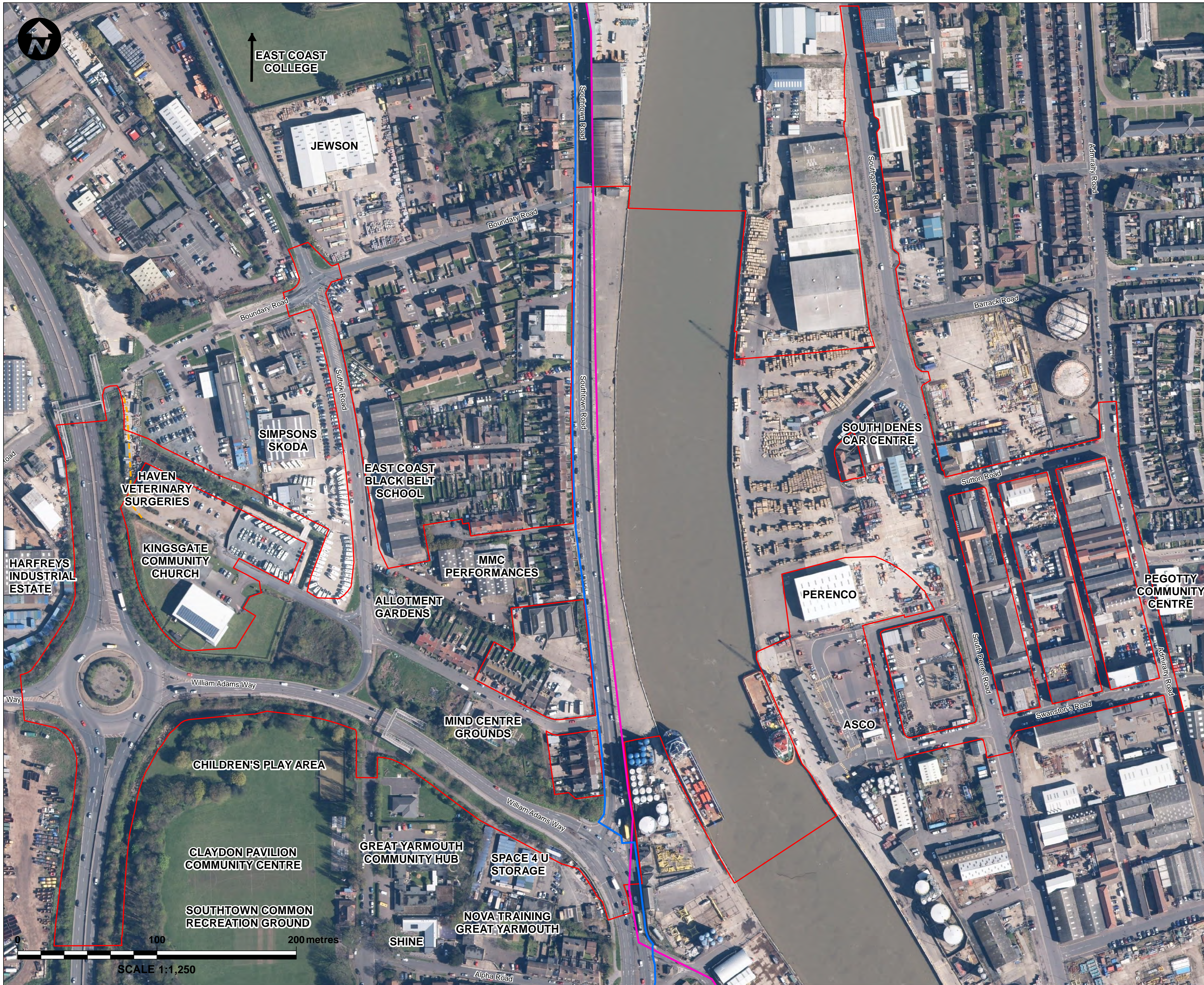
DRAWING TITLE
**FIGURE 14.1
 EXISTING LAND USES
 (REGULATION 5(2)(a))**

DRAWING STATUS
FOR DCO APPLICATION

DRAWN	CHECKED	APPROVED	AUTHORISED
PM	LMcC	HH	MK

SCALE @ A1 SIZE	DATE	REVISION
1:2,500	29/03/2019	P00

DRAWING NUMBER
 GYTRC-WSP-EGN-XX-DR-EN-2125



- Key:**
- Principal Application Site
 - Footpath
 - National Cycle Route 517
 - England Coast Path: Hopton-on-Sea to Sea Palling

Mapping reproduced by permission of Ordnance Survey on behalf of HMSO.
 © Crown copyright and database rights 2018 Ordnance Survey 100019340.

REVISION	DRAWN	CHECKED	APPROVED	DATE

Norfolk County Council
 Tom McCabe
 Executive Director of
 Community and Environmental Services
 Norfolk County Council
 County Hall, Martineau Lane
 Norwich NR1 2SG

PROJECT TITLE
**GREAT YARMOUTH
 THIRD RIVER CROSSING**

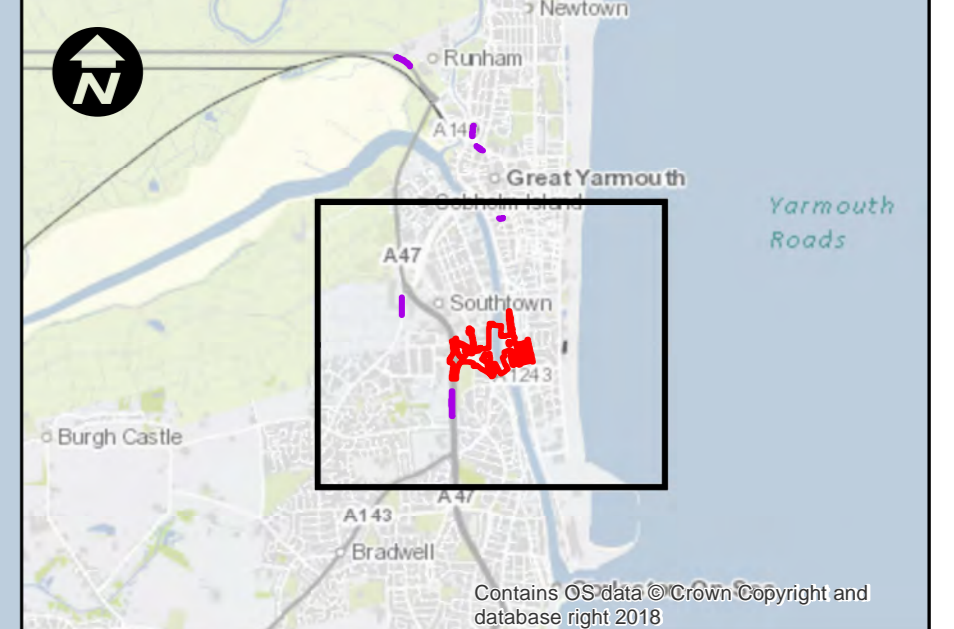
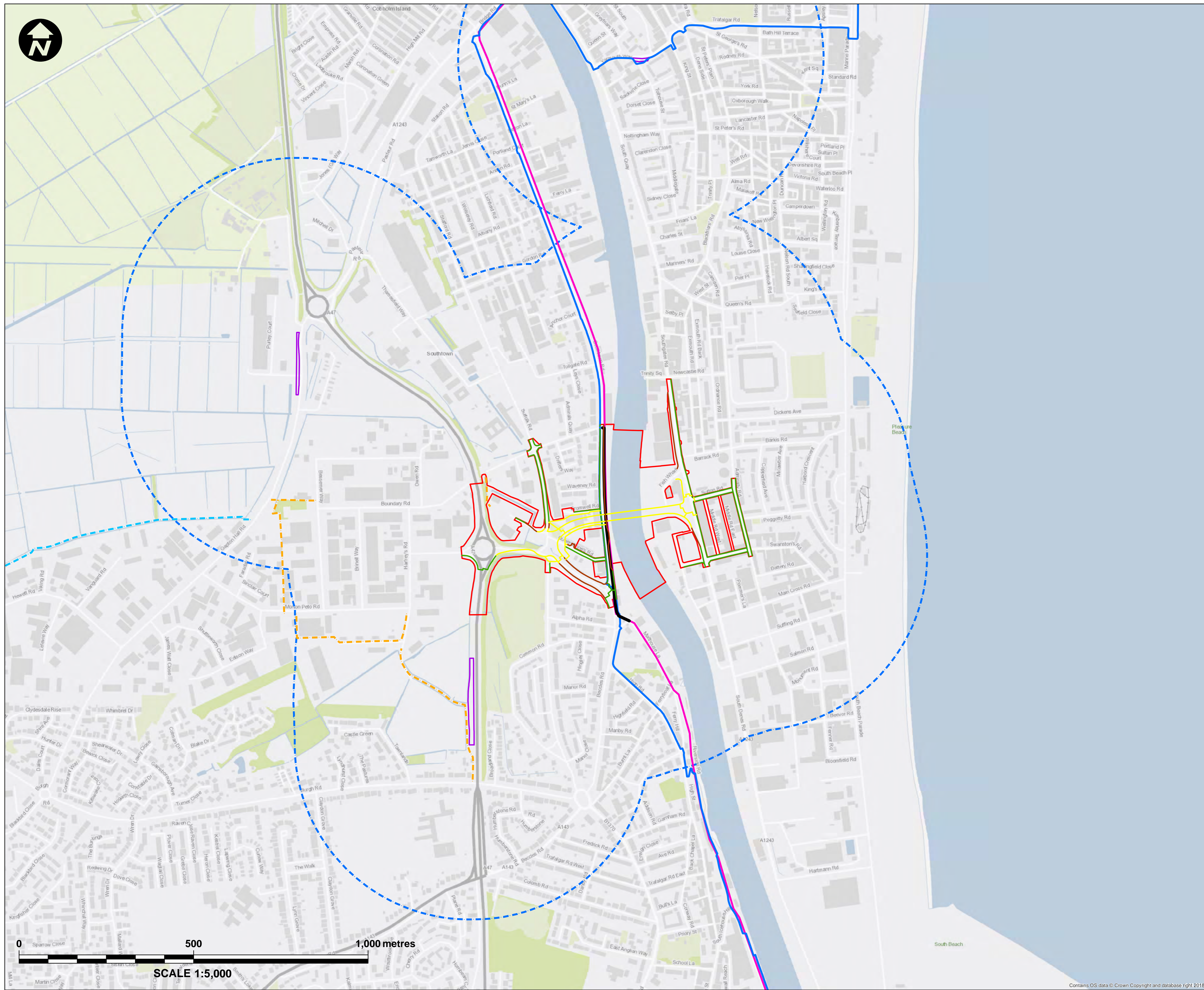
DRAWING TITLE
 FIGURE 14.2
 PEOPLE AND COMMUNITIES
 SENSITIVE RECEPTORS
 (REGULATION 5(2)(a))

DRAWING STATUS
 FOR DCO APPLICATION

DRAWN	CHECKED	APPROVED	AUTHORISED
PM	LMcC	JW	MK

SCALE @ A1 SIZE	DATE	REVISION
1:1,250	01/04/2019	P00

DRAWING NUMBER
 GYTRC-WSP-EGN-XX-DR-EN-2127



- Key:**
- Principal Application Site
 - Satellite Application Sites
 - 500m Study Area
- PRoW**
- Bridleway
 - Footpath
 - England Coast Path: Hopton-on-Sea to Sea Palling
 - Bollard Quay
 - National Cycle Route
- Existing and Proposed NMU Facilities**
- Existing
 - Improved
 - New

Mapping reproduced by permission of Ordnance Survey on behalf of HMSO.
 © Crown copyright and database rights 2018 Ordnance Survey 100019340.

REVISION	DRAWN	CHECKED	APPROVED	DATE

Norfolk County Council
 Tom McCabe
 Executive Director of
 Community and Environmental Services
 Norfolk County Council
 County Hall, Martineau Lane
 Norwich NR1 2SG

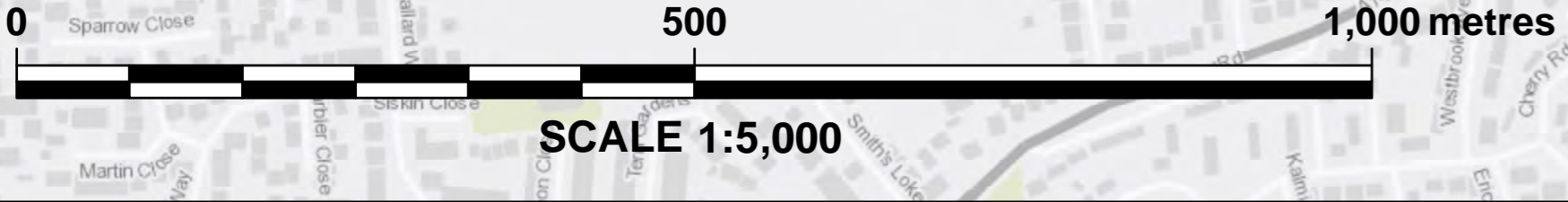
PROJECT TITLE
**GREAT YARMOUTH
 THIRD RIVER CROSSING**

DRAWING TITLE
**FIGURE 14.3
 PUBLIC RIGHTS OF WAY
 AND NMU FACILITIES
 (REGULATION 5(2)(a))**

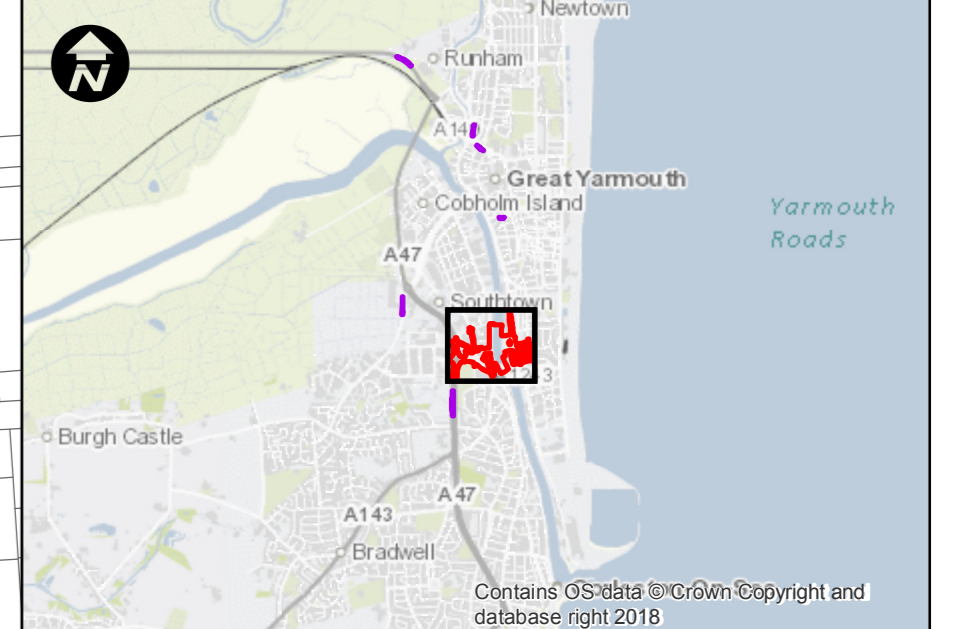
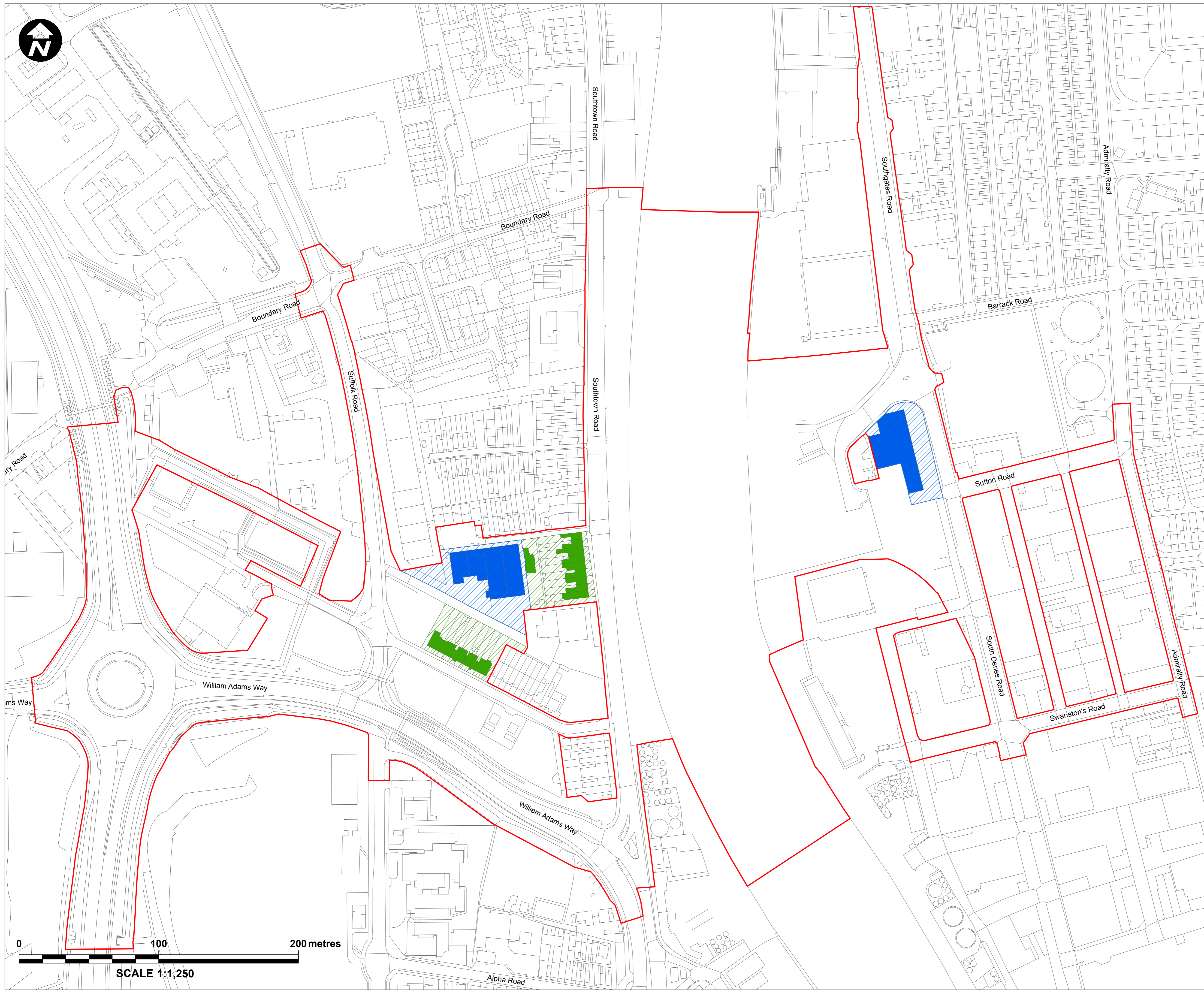
DRAWING STATUS
FOR DCO APPLICATION

DRAWN	CHECKED	APPROVED	AUTHORISED
PM	LMcC	JW	MK
SCALE @ A1 SIZE 1:5,000		DATE 01/04/2019	REVISION P00

DRAWING NUMBER
 GYTRC-WSP-EGN-XX-DR-EN-2128



Contains OS data © Crown Copyright and database right 2018



- Key:**
- Principal Application Site
 - Buildings to be Demolished**
 - Residential Dwellings
 - Land Take Associated With Residential Dwellings
 - Commercial Buildings
 - Land Take Associated With Commercial Buildings

Mapping reproduced by permission of Ordnance Survey on behalf of HMSO.
 © Crown copyright and database rights 2018 Ordnance Survey 100019340.

REVISION	DRAWN	CHECKED	APPROVED	DATE

Norfolk County Council
 Tom McCabe
 Executive Director of
 Community and Environmental Services
 Norfolk County Council
 County Hall, Martineau Lane
 Norwich NR1 2SG

PROJECT TITLE
**GREAT YARMOUTH
 THIRD RIVER CROSSING**

DRAWING TITLE
**FIGURE 14.4
 PROPERTIES TO BE DEMOLISHED
 (REGULATION 5(2)(a))**

DRAWING STATUS
FOR DCO APPLICATION

DRAWN	CHECKED	APPROVED	AUTHORISED
PM	LMcC	HH	MK

SCALE @ A1 SIZE	DATE	REVISION
1:1,250	29/03/2019	P00

DRAWING NUMBER
 GYTRC-WSP-EGN-XX-DR-EN-2129

